

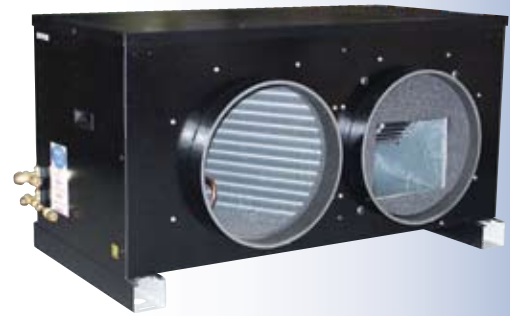
DCU+ & DHPUL Ducted Outdoor Units

The DCU+ and DHPUL are outdoor units fitted with centrifugal fans and designed for siting indoors with outdoor air being ducted into and out of the building.

The units are particularly suited to visually sensitive applications or where local planning regulations do not allow equipment on the outside of buildings.

Standard Features

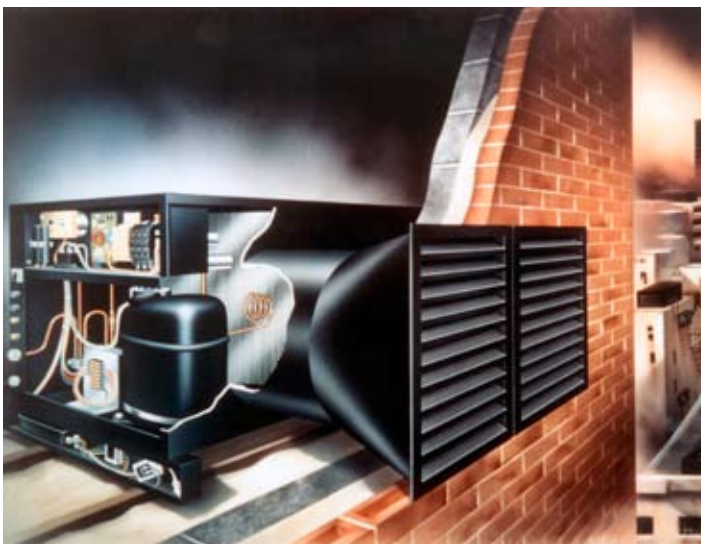
- 2.5 - 6.6kW nominal cooling duty
- Suitable for ducted indoor applications
- Reciprocating compressors
- Suction and liquid service valves
- Fan speed head pressure control
- Crankcase heater
- Contactor
- LP switch (auto) & HP switch (auto)
- 3 minute delay timer
- Easy access for installation and service



- Random start timer
- Low ambient start timer
- Factory charged with R407C refrigerant
- Expansion device (orifice)
- Ducted air inlet and/or discharge
- Compressor Jacket

Options

- CSR 1 phase
- PTC 1 phase
- Overload of 1 phase (standard on 3ph)
- Condensate pump (DHPUL only) 5m head with overflow protection
- Volt free relay / HP switch (with alarm output)
- Isolator
- Ducting kits
- Grille kit
- Duct transition piece
- Wall mounting kit



Technical Information

COOLING CAPACITIES & POWER INPUT (kW)		
Model	Capacity	Power Input
DCU+ / DHPUL 15	2.50	1.22
DCU+ / DHPUL 20	2.69	1.46
DCU+ / DHPUL 30	3.55	1.78
DCU+ / DHPUL 40	4.42	2.18
DCU+ / DHPUL 50	5.57	2.39
DCU+ 60	6.05	2.85
DCU+ 80 / DHPUL 60	6.62	3.33

HEATING CAPACITIES & POWER INPUT (kW)		
Model	Capacity	Power Input
DHPUL 15	2.69	1.31
DHPUL 20	2.88	1.56
DHPUL 30	3.74	1.88
DHPUL 40	4.61	2.27
DHPUL 50	5.76	2.47
DHPUL 60	6.24	2.94

Nominal capacities quoted at 7.5°C saturated suction temperature and 35°C ambient.

SPECIFICATION DETAILS																
Model	Compressor 1 Phase (230 volts 50Hz)			Compressor 3 Phase (400 volts 50Hz)						Condenser fan 1 Phase (230 volts 50Hz)					Connection sizes	
	Power (nominal) kW	Starting current LRA Amps	Nominal current FLA Amps	Power (nominal) kW	Starting current LRA A/Ph	Nominal current FLA A/Ph	Crank-case Heater Amps	R407C Charge Supplied g		Airflow (high speed) m3/s	Max external resistance Pa	Fan motor rating kW	Starting current Amps	Nominal current FLA Amps	Suction Ins odf	Liquid Ins odf
								DCU+	DHPUL							
DCU+ / DHPUL 15	1.00	23	5.2	-	-	-	-	600	870	0.44	100	0.34	6.0	2.6	3/8	3/8
DCU+ / DHPUL 20	1.16	28	5.9	-	-	-	-	-	-	0.44	100	0.34	6.0	2.6	3/8	3/8
DCU+ / DHPUL 30	1.46	36	7.2	1.45	18	2.7	0.25	990	1095	0.42	100	0.34	6.0	2.6	1/2	3/8
DCU+ / DHPUL 40	1.87	50	9.3	1.90	22	3.9	0.25	1050	1065	0.38	100	0.34	6.0	2.6	1/2	3/8
DCU+ / DHPUL 50	2.20	51	10.0	2.12	24	4.0	0.25	1250	1080	0.53	100	0.34	6.0	26	1/2	3/8
DCU+ 60	2.56	60	12.0	2.52	24	4.2	0.25	1190	-	0.53	100	0.34	6.0	2.6	5/8	3/8
DCU+80/DHPUL60	2.95	71	14.1	2.80	27	4.8	0.25	1480	1570	0.48	100	0.34	6.0	2.6	5/8	1/2

SOUND PRESSURE LEVELS		
Model	Fan Speed dBA	
	Low	High
DCU+/DHPUL 15	35	52
DCU+/DHPUL 20	35	52
DCU+/DHPUL 30	35	52
DCU+/DHPUL 40	35	52
DCU+/DHPUL 50	44	54
DCU+/DHPUL 60	44	54
DCU+ 80	44	54

Sound pressure levels measured at 3m distance from unit in anechoic conditions

Dimensions and Weights

DIMENSIONS & WEIGHTS - DCU+					
Model	Height mm	Width mm	Depth mm	Spigot mm	Weight kg
DCU+ 15	495	1004	490	354	69
DCU+ 20	495	1004	490	354	70
DCU+ 30	495	1004	490	354	70
DCU+ 40	495	1004	490	354	72
DCU+ 50	560	1174	490	404	81
DCU+ 60	560	1174	490	404	81
DCU+ 80	560	1174	490	404	84

DIMENSIONS & WEIGHTS - DHPUL					
Model	Height mm	Width mm	Depth mm	Spigot mm	Weight kg
DHPUL 15	495	1004	490	354	75
DHPUL 20	495	1004	490	354	75
DHPUL 30	495	1004	490	354	77
DHPUL 40	495	1174	490	404	86
DHPUL 50	560	1174	490	404	95
DHPUL 60	560	1174	490	404	98

Marstair Armytage Road Brighouse West Yorkshire HD6 1QF UK
 T: +44 (0)1484 405666 F: +44 (0)870 606 4850 E: sales@marstair.com

For full design or technical information on all systems, please refer to the relevant technical manual or contact TEV technical department. We reserve the right to alter designs and specifications at any time without notification.

Part No:06617661-01



www.marstair.com

A division of TEV Ltd

